

How We Thrive

IMPACT
REPORT
2021-2022





Our Vision

An Arlington community where all have homes, are financially stable, and thrive.

Our Mission

Arlington Thrive provides timely assistance to help our neighbors in need so they can develop the capacity to be stable, secure, and thrive in their jobs, health, and homes.

Thrive Values

COMMUNITY is the core of our work. We are there for our neighbors who urgently need our help to pay rent, get medical or dental care, or pay utilities because of job loss, a serious illness, or some other life crisis. We can be there for our neighbors because of the generosity and care from our community.

COLLABORATION makes all of us stronger. At the very heart of what we do, our partnerships, knowledge sharing, and connections allow us to find innovative, shared solutions for our neighbors facing financial crisis and improve the lives of Arlington residents in need.

DIVERSITY & INCLUSION of cultures, languages, and economic levels strengthen our mission and our community overall. We strive to create a diverse and inclusive organization and community where everyone shares the opportunity to prosper and is respected and appreciated as valuable and contributing members of our community despite our differences.

INTEGRITY is the foundation for our dedication to working with honesty, transparency, openness, and fairness. This can be seen in our work with clients, public and private partners, and funders and donors who rely on us to be the financial safety net for our community's most vulnerable members.

Letter from the Board President



*Karen Daniel,
Thrive Board President*

I am delighted to share Arlington Thrive's Impact Report! Your unwavering support, along with the collaboration of our incredible partners and community, have made this a year worth celebrating.

From our humble beginnings as a volunteer-led initiative in 1975, Thrive has grown significantly. This year, thanks to your continued generosity, we allocated \$3.4 million to prevent evictions and provide financial assistance to 2,661 local households in need.

We also conducted client surveys which identified affordable childcare as a critical obstacle to housing security. In response, Thrive launched an affordable childcare campaign. This initiative has already benefited 24 Arlington families, and has resulted in partnerships with four additional childcare centers to offer affordable spots for low-income families.

However, the journey towards a better, more equitable community is far from over. While we remain committed to serving as Arlington's financial safety net, we recognize there is still much to be done to realize our shared vision of a community where all have homes, are financially stable, and thrive.

To better assist our most vulnerable clients, we will soon be hiring a Community Navigator who will provide in-depth support and connect them with additional resources available in our community. With your support, we can achieve extraordinary outcomes. Whether you are new to Thrive or have been with us since the beginning, we are grateful for your partnership.

In these challenging times, when pandemic-era supports are fading and inflation disproportionately impacts the most vulnerable members of our community, Thrive's assistance remains an indispensable element of Arlington's safety net. We cannot tackle the urgent and critical needs of our community alone. Let's join forces to build a stronger and more resilient Arlington.

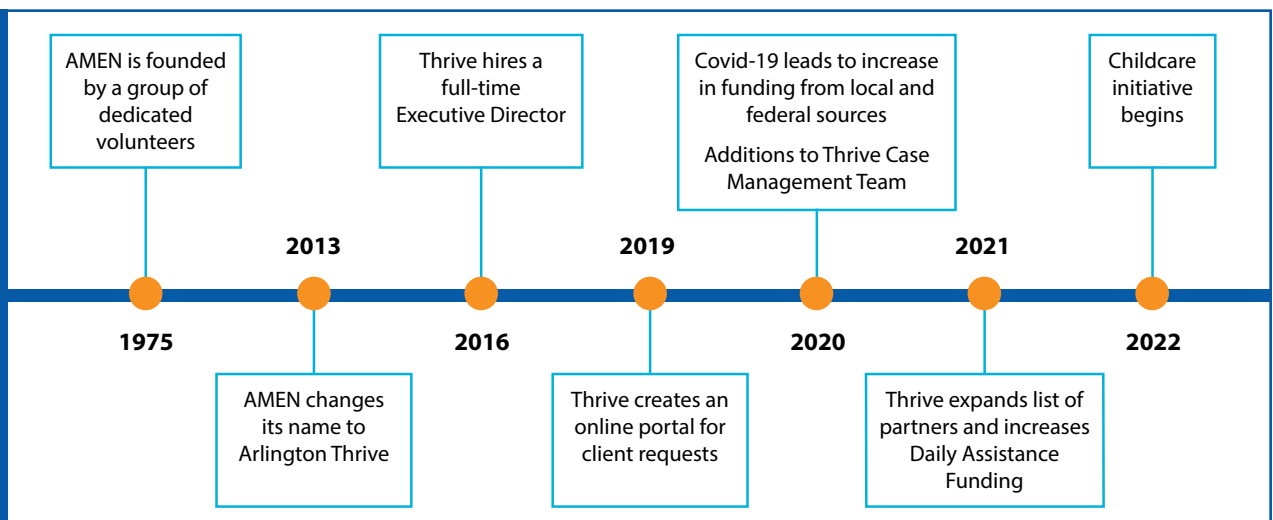
Thank you for your unwavering dedication to our cause. Together, we can make a profound and lasting impact on the lives of our neighbors in need.

With sincere thanks,

Karen L. Daniel

Karen L. Daniel

Brief History



I How We Thrive

FY22 Impact Includes:

Delivery of Emergency Assistance

We are proud of the impact we have had on our community in FY22 which delivers on our organization's commitment to helping neighbors in need. Through our emergency funds program, we provided crucial **assistance to 2,661 families**, enabling them to overcome financial crises and maintain their stability. In total, we **disbursed \$3,437,222.91 in emergency assistance**, ensuring that families had the resources they needed to cover essential expenses such as rent, utilities, and medical bills.

Eviction Prevention

Through our work, we **kept 718 families in their homes**, preventing evictions and providing critical support to maintain housing stability. Our commitment to our community is unwavering, and we will continue to work tirelessly to provide support and assistance to those in need in the years to come.

Affordable Childcare

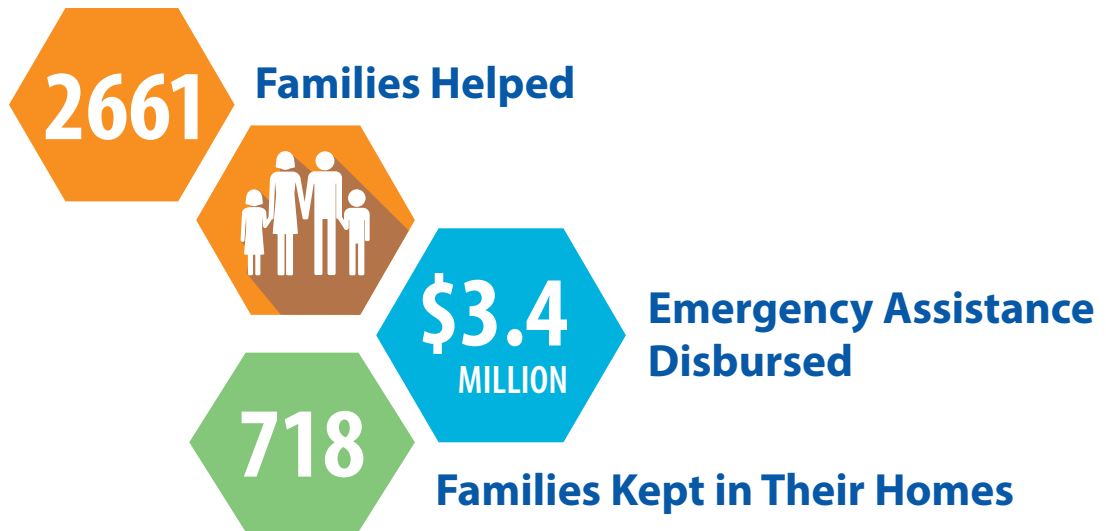
Through a rigorous research process, we identified the critical issue of affordable childcare among our clients and developed a comprehensive strategy to tackle it head-on. With generous support from the community and a grant from Arlington County, **we've hired a dedicated Childcare Coordinator** who is committed to making a difference in the lives of families in need.

Collaborative Partnerships

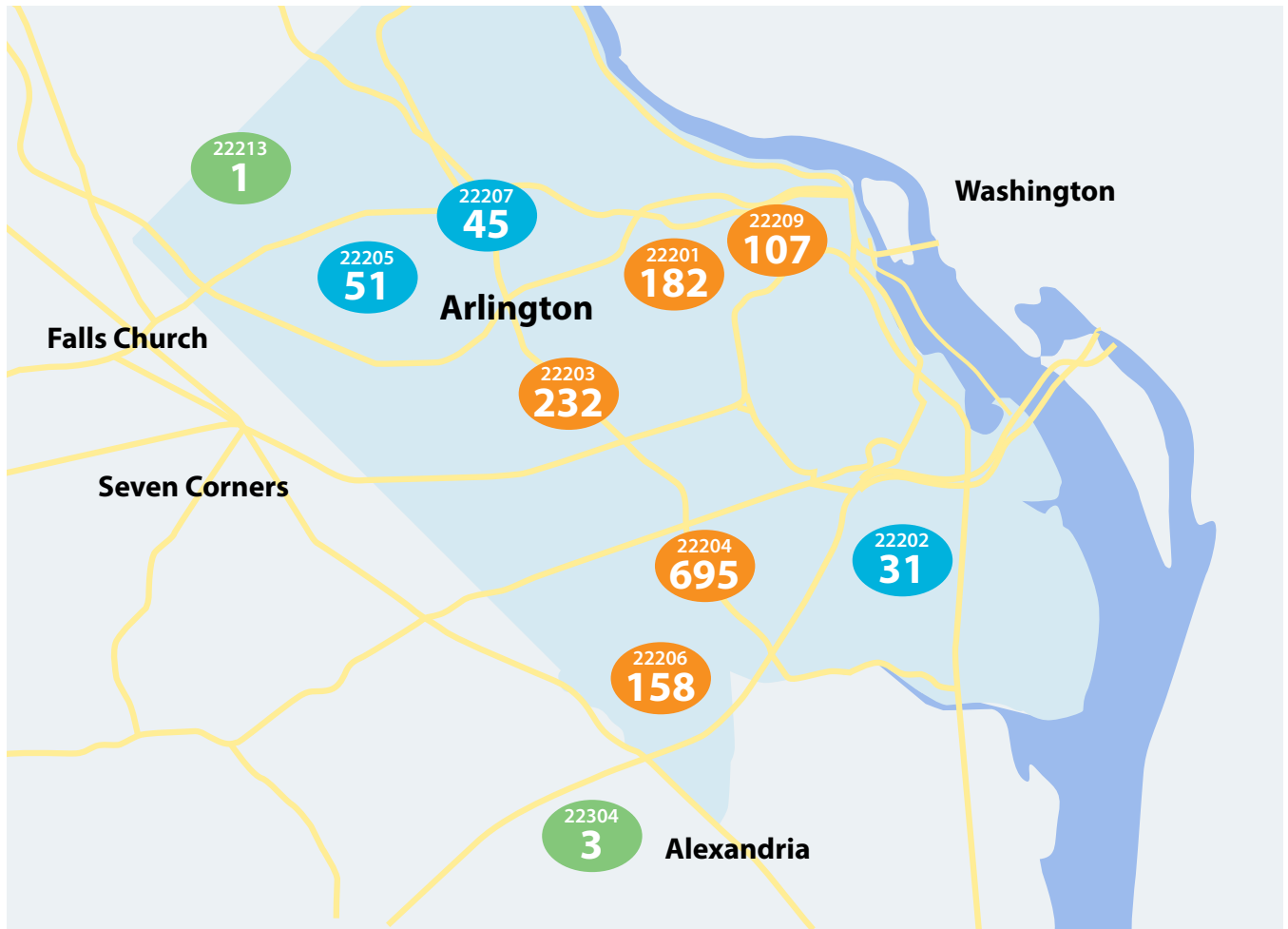
Our work is made possible through **key partnerships with Arlington's Safety Net, Department of Human Services, Arlington Interfaith Network, and the County**. Our collaborative partnerships have expanded our reach and enabled us to provide comprehensive support to our clients, addressing not only their immediate needs but also working toward long-term stability.

Information System Implementation

One of our notable achievements in FY22 was the **implementation of the Apricot information system**, which has enabled us to better manage individual cases, monitor and track client information, and evaluate our results. This new system has streamlined our processes and allowed us to serve our clients more efficiently.



Client Addresses by Zip Code



I Why We Thrive

Our Financial Emergency Room

Arlington Thrive is known as our community's "financial emergency room" — a safety net for neighbors facing financial crisis. We believe everyone deserves access to life's basic necessities, including food, shelter, and healthcare. We also believe it is our collective responsibility to ensure that everyone has the opportunity to thrive in our community. Living by these beliefs strengthens our community and upholds the fundamental principles of fairness, equality, and social justice which are the foundation for our work.

This year we saw rising rents and rapid inflation that left a significant number of local households struggling to pay bills and put food on the table. The US Census Bureau's January 2023 Household Pulse Survey highlights the magnitude of the problem, with 25.4% of respondents in the Washington Metropolitan Area reporting a likelihood of eviction or foreclosure within the next 2 months. A further 16.8% of respondents indicated they have been unable to pay a utility bill in the past 12 months, and 7.6% admitted not having had enough to eat in the last 7 days.

Our approach to financial assistance is holistic and empathetic because we understand the impact economic challenges can have on families and communities. Our trained social workers provide neighbors in need with much more than a check. They offer a listening ear and guidance, to connect families with additional resources and services that will help them achieve stability and security. We believe everyone deserves a chance to succeed and, with our donors' continued support, we will continue to build a brighter future for all in our community.



Our approach to financial assistance is holistic and empathetic because we understand the impact economic challenges can have on families and communities.

Securing Basic Necessities

Securing basic necessities is a critical element of Arlington Thrive's mission to help vulnerable members of the Arlington community. According to the Arlington Community Foundation, over 10% of the population, or 24,272 individuals, are living below 150% of the federal poverty level.¹ For a family of four, this means an income of \$42,690,¹ which is only one-third of what is required to meet basic needs in the area. The Economic Policy Institute estimates that a family of four in Arlington requires \$118,614 to cover basic necessities such as housing, food, healthcare, and childcare.² At Arlington Thrive, we believe that **no one should have to choose between paying rent or putting food on the table.**

Annual Costs

2 adults and 2 children, Arlington County, Virginia

Housing	-\$24,819
Food	-\$13,132
Child Care	-\$22,396
Transportation	-\$10,420
Health Care	-\$15,523
Other Necessities	-\$13,751
Taxes	-\$18,573
Average Annual Expenses	\$118,614
Average Annual Income	\$42,690
Total Deficit	-\$75,924



Source: EPI (<https://www.epi.org/resources/budget/>)

1. Arlington Community Foundation. (n.d.). Arlington's Community Foundation. <https://www.arlcf.org/news-events/2022-poverty-information-in-arlington/>

2. Economic Policy Institute. (2018). The Basic Family Budget Calculator. <https://www.epi.org/resources/budget/>

I Programs and Partners

At Arlington Thrive, we are driven by a powerful vision: to create a community where everyone has access to the resources and support they need to thrive. We know collaboration is key to achieving this objective. That is why we are proud to partner with **other safety net nonprofits, government agencies, faith-based organizations, and policy makers** to enhance our impact on the community. Together, we can go beyond addressing emergencies and connect people with other resources that help them over the long-term and prevent a further downward spiral.

Collectively, we provide short- and long-term solutions that tackle the root causes of poverty and hardship in our community. We work together to identify the barriers that prevent people from improving their circumstances and collaborate to strengthen Arlington's social, health, and financial safety net. Through our combined efforts, we create a more just and equitable community where everyone has the opportunity to reach their full potential.

In the spirit of collaboration, we are delighted to announce that this year we have hired the first Arlington InterFaith Network (AIN) Coordinator, Dalton McBeath. AIN was founded in 2019 to convene people of diverse faiths for the spiritual well-being and the common good of Arlington. Dalton has taken on the mission of convening leaders across the entire spectrum of faiths, denominations, sizes, and geographic locations. Working closely with the AIN Steering Committee, Dalton has organized monthly meetings and in-person events, and developed a monthly newsletter to share community events and opportunities for service. Thanks to Dalton's contributions, we are confident AIN will continue to foster connections and build bridges across our community.



County Financial Assistance Programs

Our partnership with Arlington County goes beyond financial support as we collaborate with county departments on issues like housing, childcare, aging and disability to provide our clients access to a comprehensive suite of services. Our collaboration has helped thousands of individuals and families access critical medical and dental care, stay in their homes, and put food on the table, showcasing the importance of community partnerships and investing in programs that support the most vulnerable members of our society. We are grateful for Arlington County's ongoing support and look forward to continuing our work to build a stronger, more resilient community.

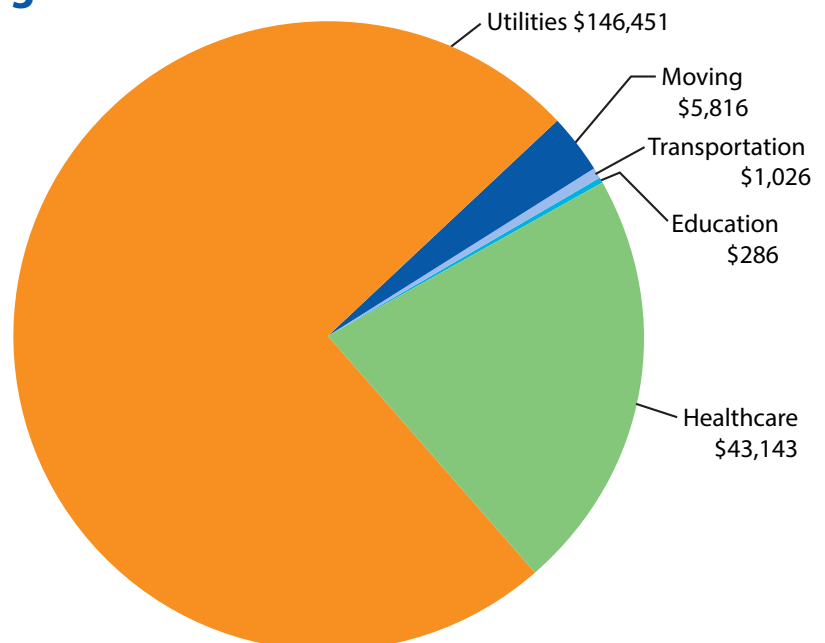
Funding Source	Total Request Amount
Carter-Jenkinson Fund	\$2,833,289.46
CDBG Fund	\$17,214.25
Daily Fund	\$260,213.92
PSH Emergency Fund	\$106,140.23
PSH Maintenance Fund	\$26,159.95
Risk Reduction Fund	\$3,000.00
Total	\$3,296,017.80

The vast majority (94%) of county funding is needed for housing.

The rest breaks down as follows:



\$3,082,082

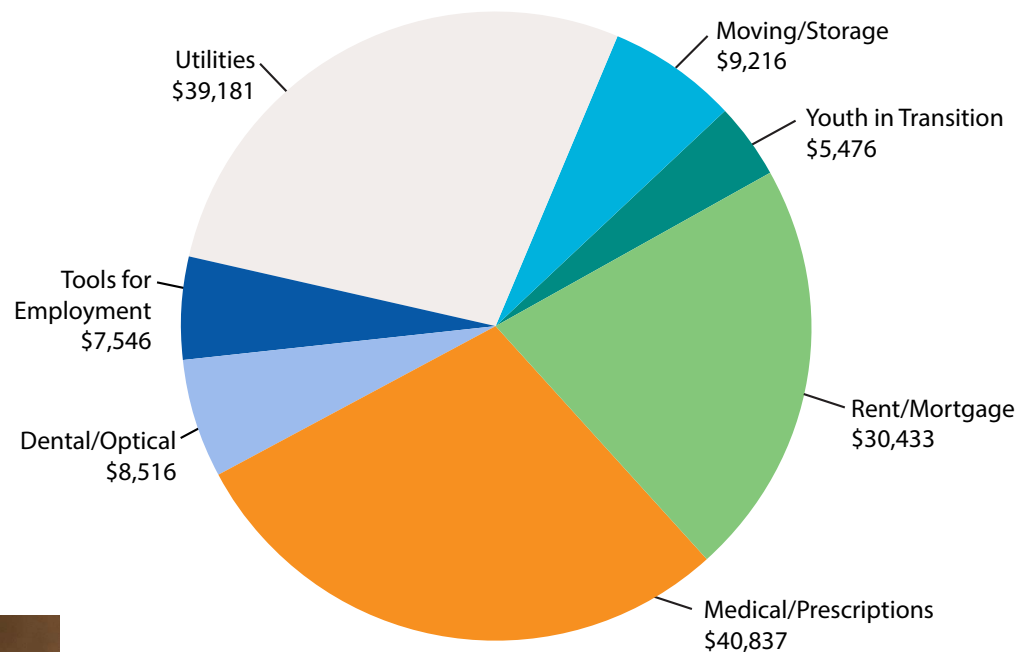


Thrive's Emergency Assistance Programs

In Fiscal Year 2022, Arlington Thrive assisted neighbors in need through the following financial assistance programs:

- The **Daily Fund** provided \$260,214 in emergency medical, prescription, rent, and utility payments to 463 individuals.
- The **Carter-Jenkinson Homelessness Prevention Program** provided \$2,883,289 to 717 individuals facing eviction.
- The **Arlington Emergency Relief Fund** provided \$12,899 prescription and dental help to 99 individual and \$121,031 in rent and utility assistance to 390 individuals directly affected by COVID-19.

While the majority of our FY22 assistance went towards keeping individuals in their homes, we also supported neighbors facing other crises.



"...Arlington Thrive is here for me. In the moment when we really, really needed help, Thrive was here."

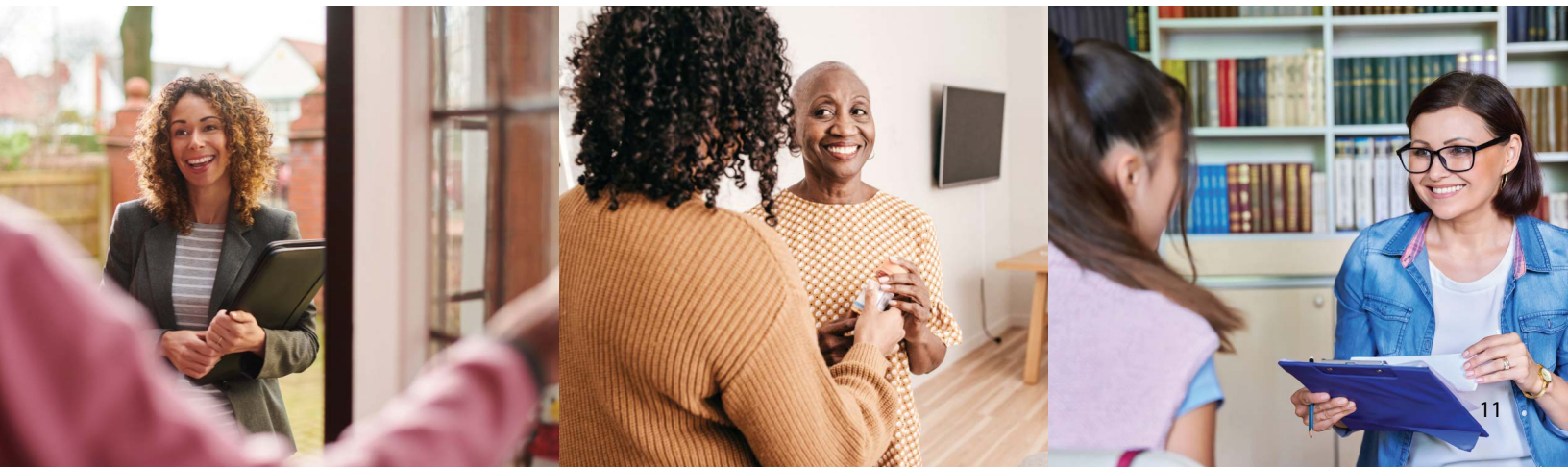
Case Management Programs

At Arlington Thrive, we believe in a comprehensive approach to supporting community members facing financial crisis. Our caring case management team goes above and beyond to provide not just emergency financial assistance, but also financial social work support and trauma informed care. We understand that economic challenges can have a profound impact on families and communities, and we are committed to addressing the unique needs of our clients with empathy and compassion.

Our case management team works tirelessly to ensure our clients receive the financial assistance they need, along with the emotional support and guidance necessary to navigate their financial challenges. Thrive's trained social workers offer a listening ear, providing a safe space for clients to share their concerns and fears. We take a trauma informed care approach, recognizing that financial crisis can be a deeply stressful experience, and we strive to provide compassionate support at every step.

In addition to emergency financial assistance and emotional support, Thrive's social workers also connect our clients with wraparound services from other local government agencies and nonprofits. We understand that financial challenges are often multifaceted and addressing them requires a coordinated effort. Our case management team works closely with other organizations to ensure that our clients have access to a wide range of resources and services to help them achieve stability and security.

Whether by connecting clients with affordable housing options, job training programs, or healthcare services, we are committed to providing comprehensive support to neighbors in need. With your continued generosity, we can empower our clients with the tools and resources they need to overcome financial challenges and build a brighter future for themselves and their families.



Client Stories



Carrie: Rent and Job Search Support

Carrie is an incredibly strong 31 year old woman. She is responsible for her younger sibling, who is a minor, and was devastated when she lost her job during the pandemic. Nonetheless, she persevered, only seeking assistance from Thrive in February 2022. Despite the numerous struggles Carrie faced last year—including the loss of her job, mental health issues, and her sibling's legal issues—she has remained resilient and determined to provide a better life for herself and her sibling. Your generosity enabled us to provide assistance to her in the form of rent payment and job search support. As a result, she was able to secure a new position last December and cover part of her own rent, an achievement of which she is justifiably proud. Carrie's strength and determination to push forward through difficult times is truly admirable and inspiring. We are honored to be a part of her journey and to witness her courage and strength. Your generosity helps support people like Carrie and hundreds of other families in need.



Brendan: HIV, Counseling, Rent & Utilities

Brendan's journey with HIV has been tough, but he never lost hope. Despite the physical and emotional toll of his diagnosis, he persevered and found support through Arlington Thrive. We provided him with the financial assistance he needed to get through a difficult time, and never stopped believing in him. With support from our team of professional social workers, Brendan has been able to focus on his health and get back on his feet. He has now been referred to the Arlington Employment Center, which is helping him to improve his job prospects. He is applying for various jobs and is well on his way to a brighter future. Brendan's determination and resilience serve as an inspiration to us all.



Raquel: Job Search & Language Training

Raquel is a remarkable example of someone who is dedicated to making a change in her life. She is currently searching for a job that can pay her more than her current situation. However, her lack of English skills is holding her back. Fortunately, Raquel reached out to a social worker at Arlington Thrive. We connected her to the Arlington Employment Center and Ceneas, a program that can help her acquire new skills. Ceneas can help Raquel learn to read and write in Spanish, learn English as a second language, and even provide her with GED Prep. Raquel's resilience and determination is inspiring, and we are confident she will find a job she is passionate about and one that will provide a better life for her.

Names and photos have been changed to protect the identities of our clients.

Access to Affordable Childcare

A Cornerstone of Thriving Communities

During the COVID-19 pandemic, Thrive's case management team expanded. Their close relationships with clients created opportunities to better understand the reasons why families find themselves in need of emergency financial assistance. In one survey, we discovered 40% of parents were unable to return to work because of the lack of affordable childcare. This realization led us to actively seek opportunities to collaborate with government, partners, and community leaders to increase the supply of affordable childcare in Arlington.



*Katie Cristol,
Arlington County Board*

With generous support from the Washington Forrest Foundation, Thrive researched how our programs could apply innovative solutions and best practices locally. This research was driven by our belief that while financial emergency assistance remains critical, we must also aim to help families avoid financial crisis by supporting their pathway to stability.

On October 26, 2022, Thrive hosted "Access to Affordable Childcare: The Missing Link to Economic Equity." The panel event convened 78 local residents, childcare experts, community leaders, partner organizations, and government representatives to identify concrete steps that could be taken to address Arlington's shortage of affordable childcare. The honorable Katie Cristol graciously opened the event. A highlight of Cristol's County Board tenure was the development of the County Childcare Initiative (CCI) in partnership with the Arlington Community Foundation in 2019. Her keynote speech emphasized her belief that all Arlington families deserve access to affordable childcare -- which she noted is "an essential bridge to work." This premise was central to a lively panel discussion featuring local and national experts.



Pictured from left to right, panelists Malinda Langford, Senior Vice President, Northern Virginia Family Services; Anne Hedgepeth, Deputy Chief of Policy, Childcare Aware; Thrive Board President, Karen Daniel; panelist Rasheed Malik, Senior Director, Center for American Progress; and moderator, Krysta Jones, Founder, Vote Lead Impact

Based on our research and wide-ranging discussions with experts, clients, and our own case management team, Thrive took concrete steps to address this pressing need in our community. With support from the Community Development Block Grant, Thrive hired Javairia Henry, a full-time childcare coordinator, in the spring of 2022. With her leadership, Thrive's Childcare program is making a real difference in the lives of families in crisis. As of December 2022, we have provided assistance to 13 different families, 11 of which were headed by women. Our program has expanded to provide emergency childcare scholarships to families facing financial hardship. Javairia also connects clients with government subsidies which allow them to access high-quality care while they get back to work and back on their feet.

Cost Burden: Childcare in Arlington

57% of Thrive's clients earned < \$20,000 in FY22

According to the U.S. Department of Labor, the average cost of childcare in Arlington was:



Infants:
\$27,220/year



Toddlers:
\$22,297/year



Preschool:
\$22,297/year



*Javairia Henry,
Childcare Coordinator,
Thrive*



"Every child deserves access to a challenging, nurturing, and rewarding early childhood education. Partnering with Thrive allows for more families to have access to childcare which provides a necessary and early foundation of education that will benefit a child for life. STEM Preschool is thankful for this partnership."

– STEM Preschool owner, Portia Moore-Thomas

Financial Information

Fiscal Year 2022



"...having direct access to families in crisis is a door wide open to initiate meaningful change."

*– Susan Cappellini,
Board Treasurer*

SUPPORT AND REVENUE

Government, Grants, & Contracts	\$3,111,883
Contributions	\$1,095,888
Investment Income/Loss	(\$78,644)
Other Revenue	\$3,645
TOTAL REVENUE	\$4,132,722

EXPENSES

PROGRAM SERVICES

Direct Assistance	\$3,474,530
Programming	\$697,644

SUPPORTING SERVICES

Management & General	\$374,321
Fundraising	\$374,657

TOTAL EXPENSES	\$4,921,152
-----------------------	--------------------

NET ASSETS

FY22 Total Revenue	\$4,132,772
FY22 Total Expenses	\$4,921,152
Revenue-Expenses	(\$788,380)
FY22 Starting Balance	\$2,642,312
Investment Gains/Loss	(\$100,378)
FY22 Ending Balance	\$1,853,931



*With your
support and our
determination,
we will continue
to thrive!*



arlingtonthrive.org/donate
info@arlingtonthrive.org
 P.O. Box 7429 Arlington, VA 22207
 (703) 558-0035
 EIN: 51-0207684